

USING SHARED BIKES IN HONG KONG AND MAINLAND CHINA

THE REASONS BEHIND DIFFERENCES BETWEEN THEM

Introduction

The shared bike is now playing an important role in **improving city transportation efficiency**, **promoting energy conservation**, and emission reduction.

Mainland China

There are currently over 750,000 shared bikes in China and plans to increase that number to nearly a million.

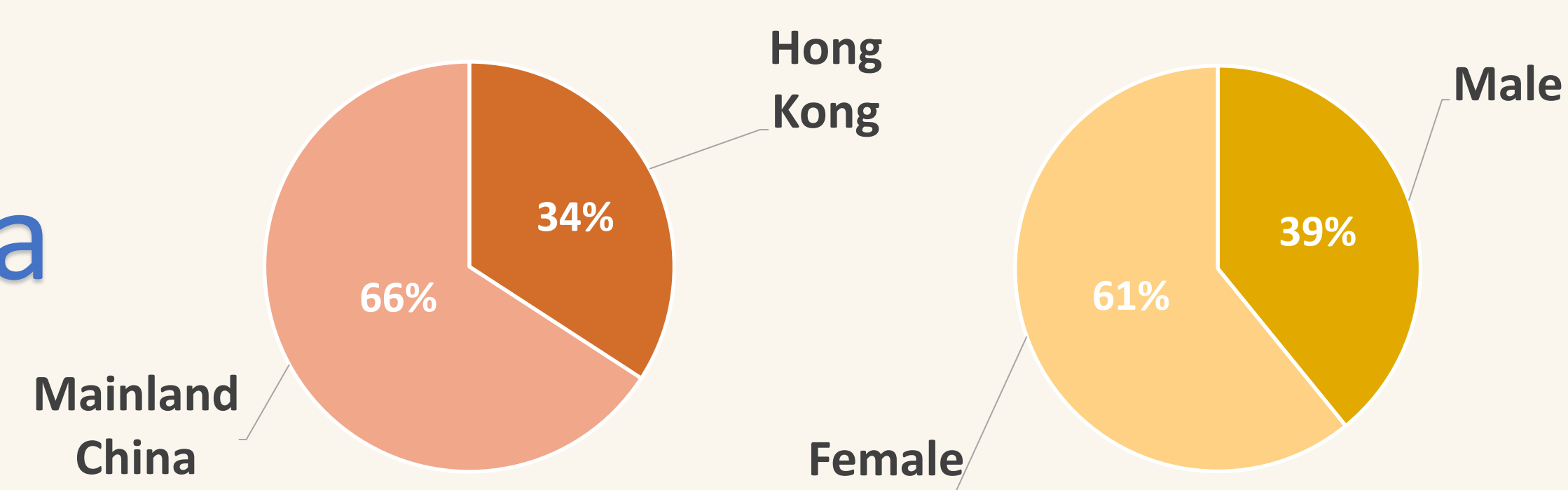


Hong Kong

By 2018, the number of shared bicycles in Hong Kong had reached 15,000.



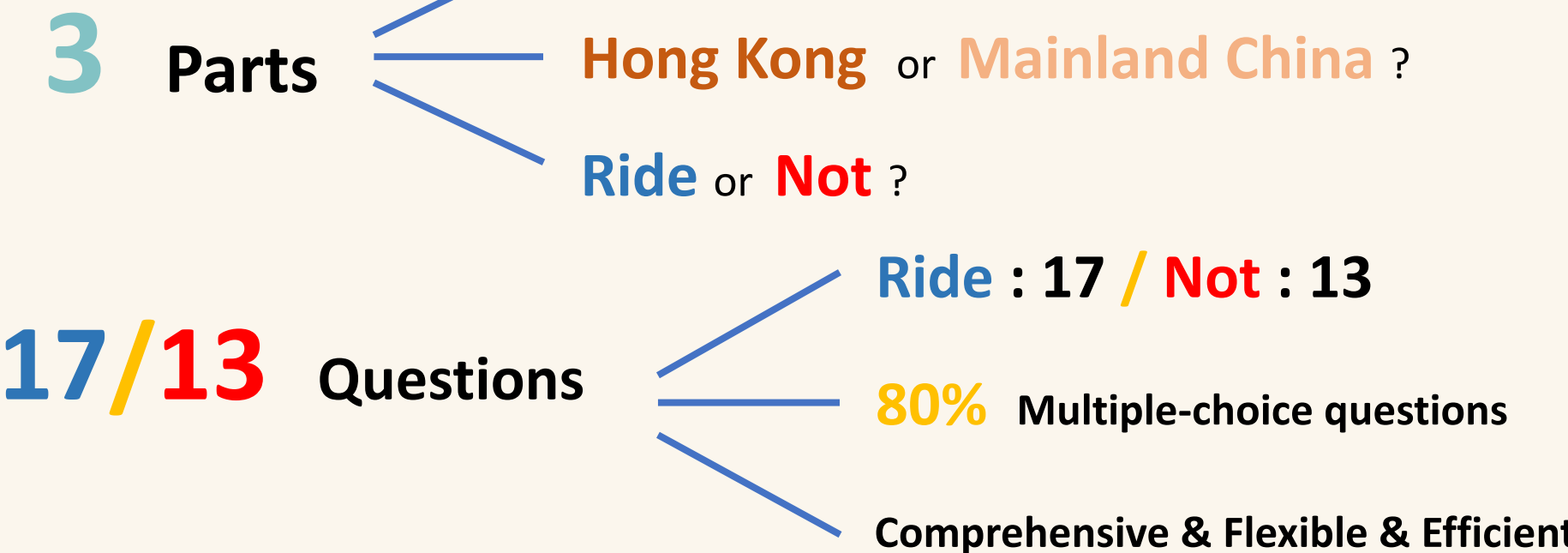
Data



1 Questionnaire



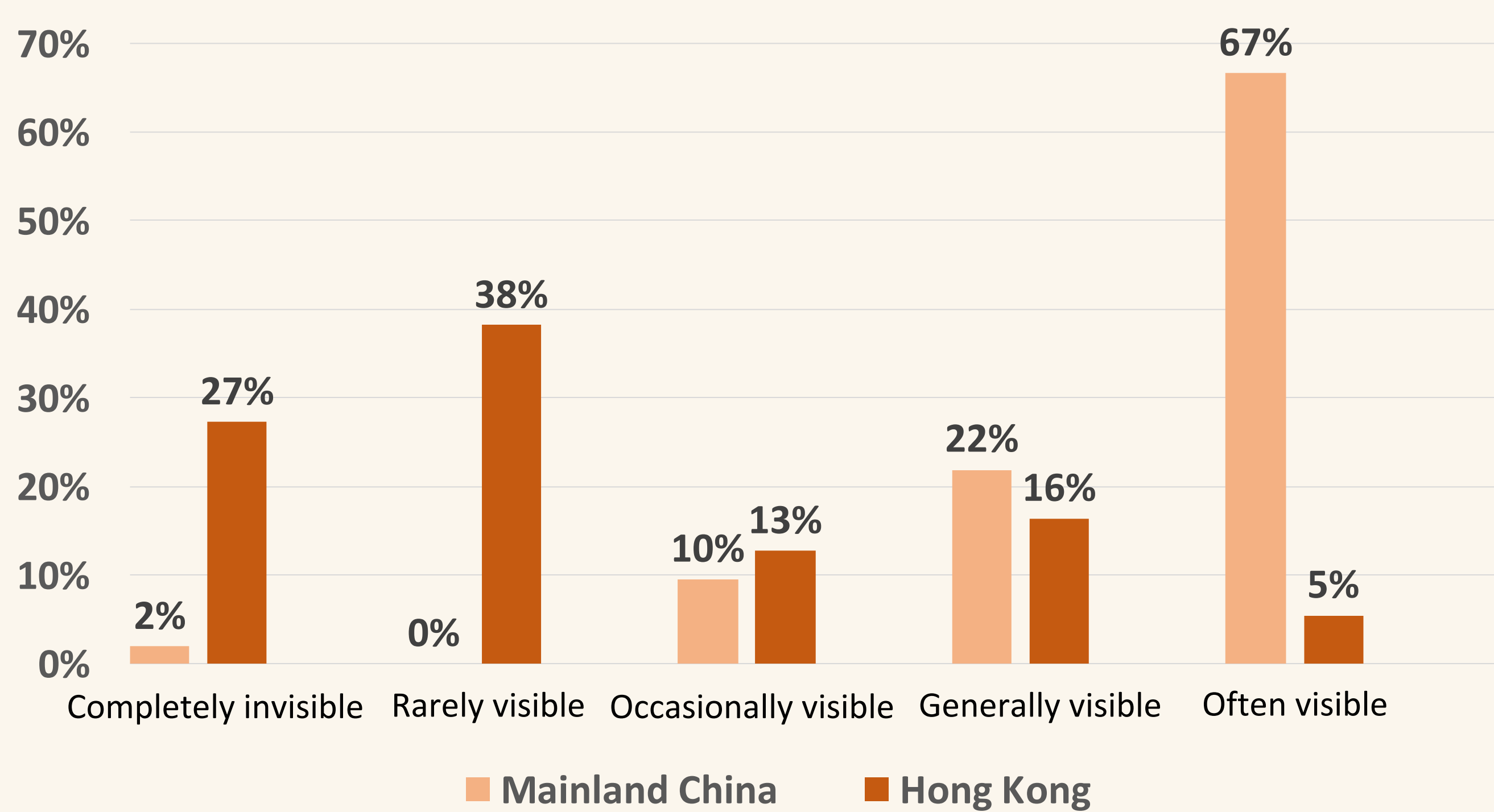
Methodology



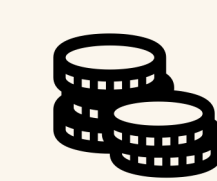
Results



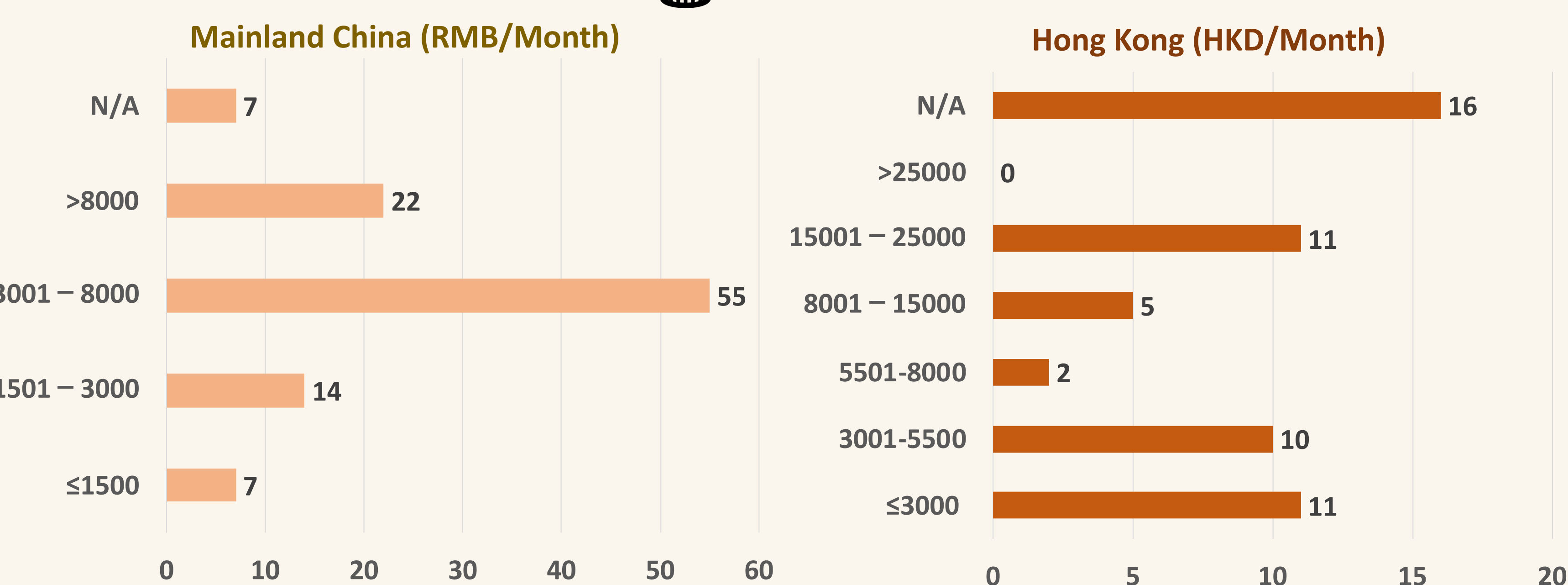
Popularization






- Generally visible & Often visible: **89% Mainland China** vs **21% Hong Kong**
- Hong Kong's urban planning is **pedestrian friendly**. Most buildings are accessible on foot. Citizens travel mainly on foot and minibus.
- Bicycles are generally as riding tools for tourism and recreation in coastal, mountain and suburban areas. They are **recreational** and **leisure activities**.



Income



Mainland China vs Hong Kong

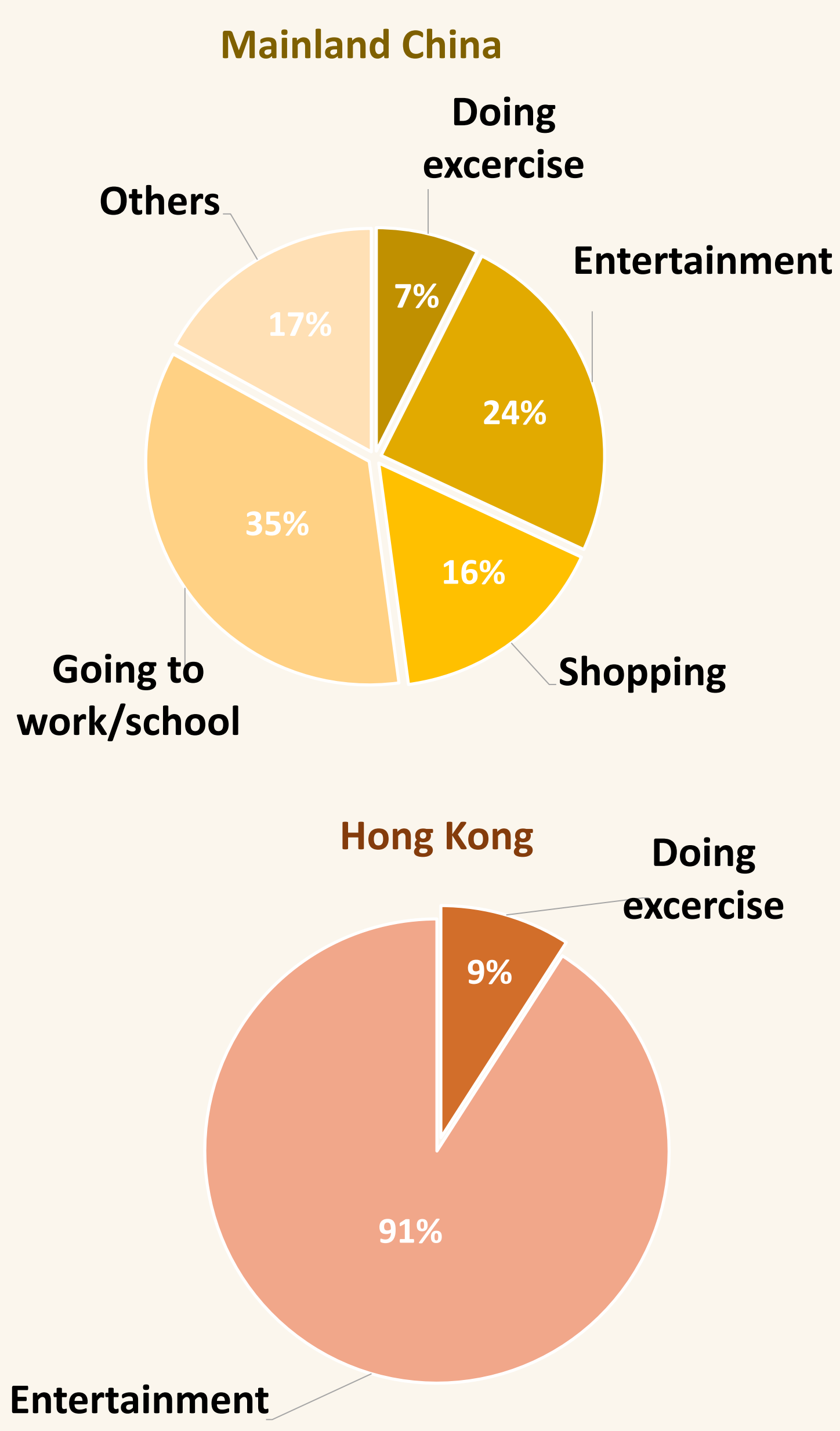
	Median monthly wage in 2018:	6000 RMB	16800 HKD
	Average hourly price of using shared bikes :	1 RMB	8 HKD
	Ratio of wage to average hourly price:	6000	> 2100



"Law of demand"



Purpose

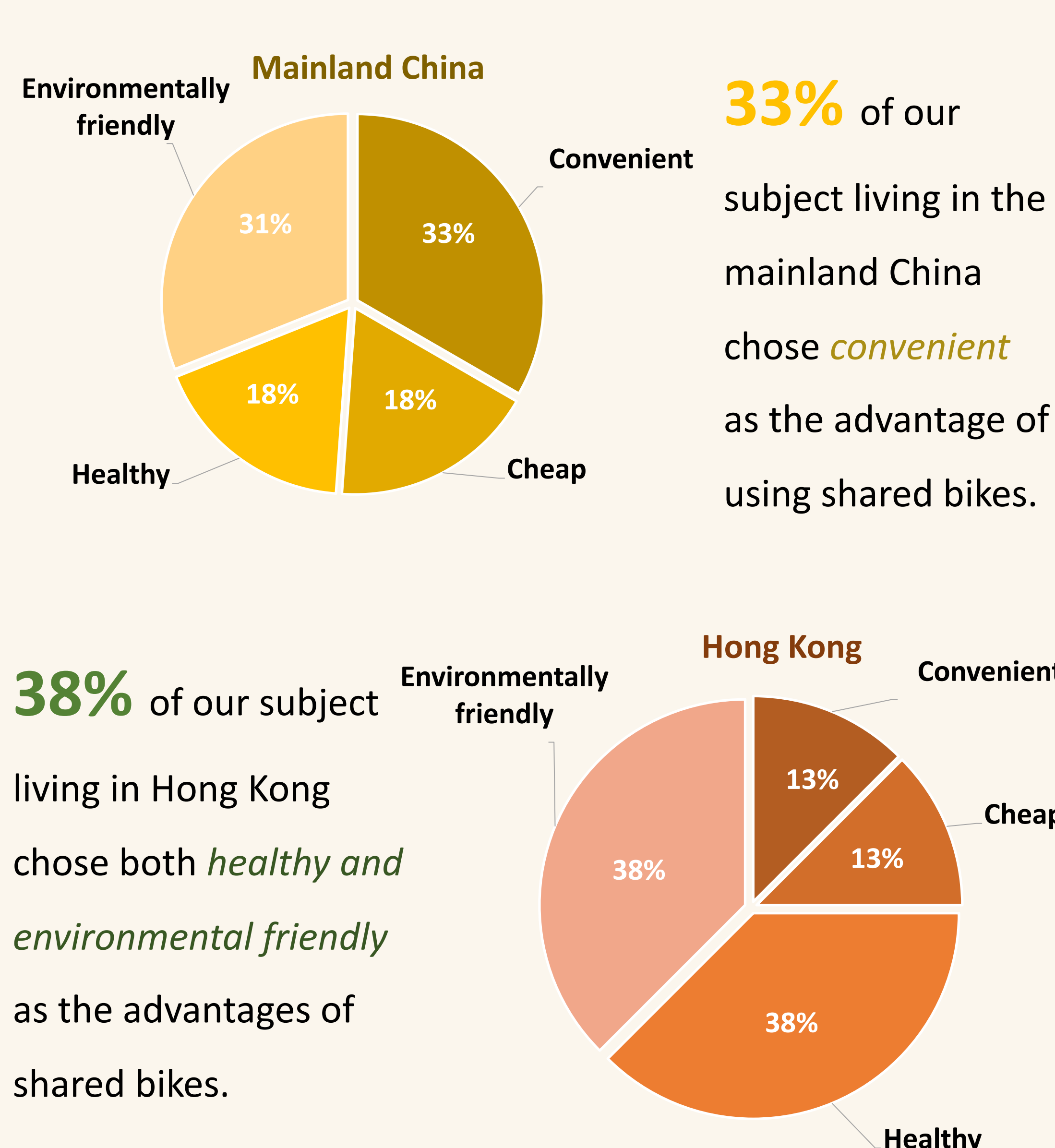


35% of our subject living in the mainland China preferred to use shared bikes for **going to work/school** and **24%** for **entertainment**.

91% of our subject living in the Hong Kong preferred to use shared bikes for **entertainment**, which shows great difference compared to people in the mainland China.



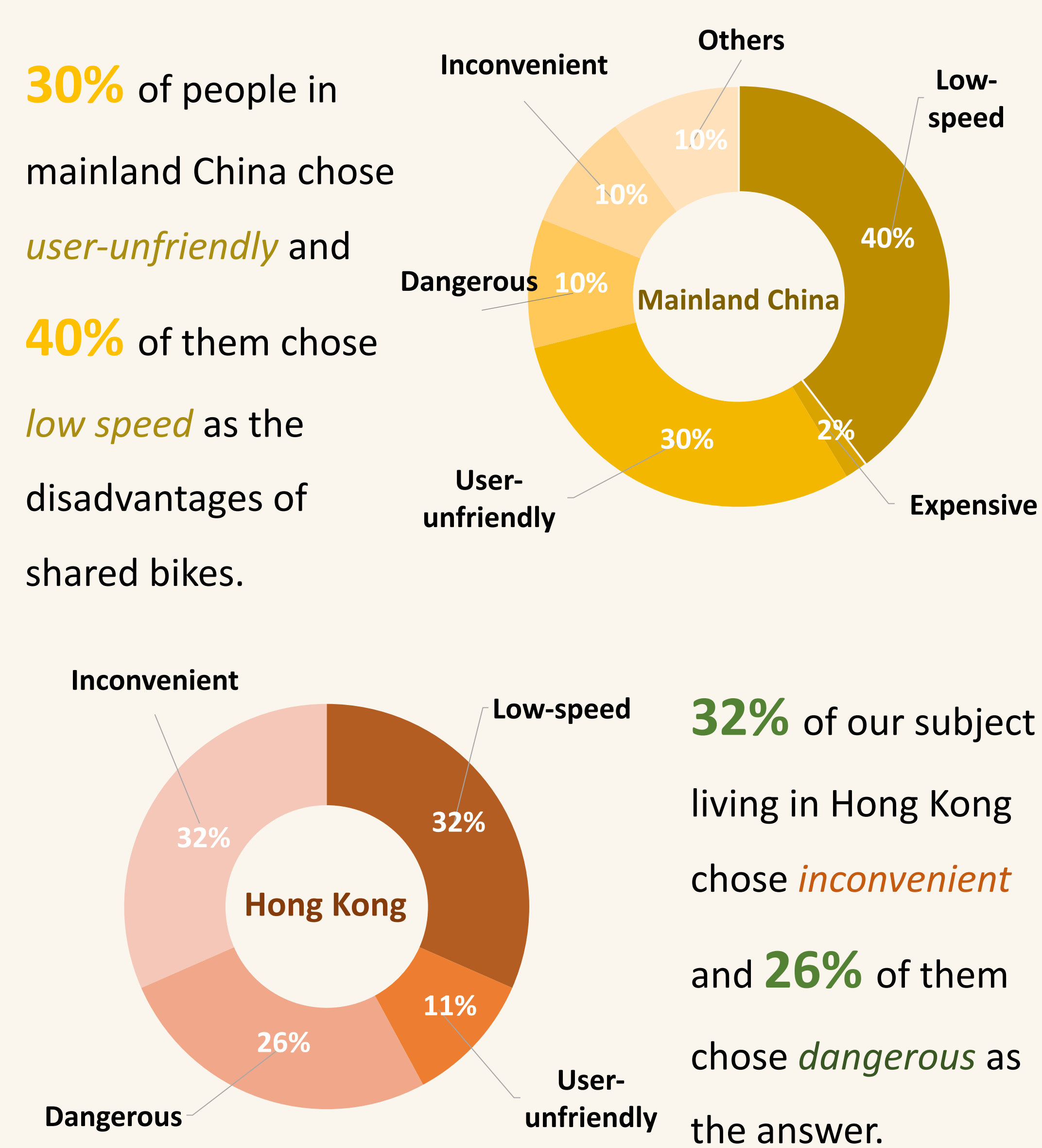
Advantages



38% of our subject living in Hong Kong chose both **healthy** and **environmental friendly** as the advantages of shared bikes.



Disadvantages



30% of people in mainland China chose **user-unfriendly** and **40%** of them chose **low speed** as the disadvantages of shared bikes.

32% of our subject living in Hong Kong chose **inconvenient** and **26%** of them chose **dangerous** as the answer.



Conclusion & Advice



Government

- Build more cycleways in New Towns, such as Hung Shui Kiu and Kwu Tung North New Developing Area
- Strengthen the quality testing process of shared bikes



Company

- Strengthen research and development and improve the quality of bicycles including security, speed, and sports performance
- Encourage the popularization of shared bikes in New Towns or tourist attractions, making them more accessible